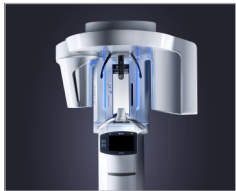


# Dentsply Sirona Digital Workflow

## Multiple teeth replacement

The Practice-to-Lab DS Signature Workflows for partial and full arch cases reinforce good communication between clinician, laboratory and the patient.



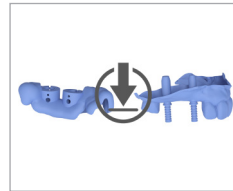
3D imaging - Axeos  
Patient with  
scan prosthesis



Digital Impressions -  
Primescan  
For Full Arch: Axeos  
Second 3D imaging scan  
of denture alone



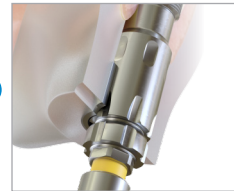
Digital planning -  
Simplant Pro



Order Simplant Guide  
File and Simplant Core  
File



Dental technician prints  
the surgical guide.  
Dental technician designs  
and mills the temporary  
bridge



When surgical guide  
and restoration kit are  
delivered to the practice,  
place the implant  
according to the drilling  
protocol



Implant surgery and  
temporization

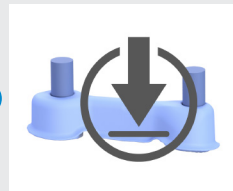
## Final restoration

After soft-tissue healing, the temporary bridge is removed and scan bodies are attached to the MultiBase Abutments EV for minimal switch of components interfacing with the implant.

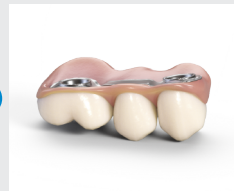
Submit the Primescan data and order an Atlantis suprastructure, even for complex restorations.



Digital Impressions -  
Primescan  
Use IO-FLO-S scan  
bodies on abutment level



Order Atlantis BridgeBase  
and download Atlantis  
BridgeBase Core File  
to design the final  
restoration

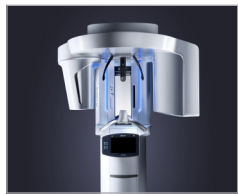


Place the final restoration

# Dentsply Sirona Digital Workflow

## Single-tooth replacement

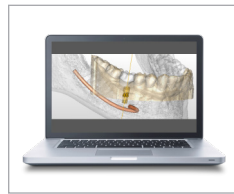
The Practice-to-Lab Single-Tooth DS Signature Workflow provides great conditions for individualized esthetics and healthy soft tissue. The Simplant Guide and the Atlantis Abutment are delivered at implant installation, together with the temporary crown. This allows for immediate individualized temporization, even after immediate implantation after extraction – in a single surgical visit.



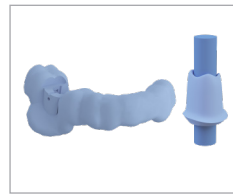
3D imaging - Axeos



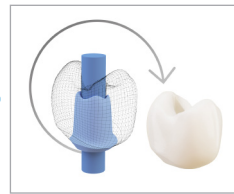
Digital Impressions - Primescan



Digital planning - Simplant Pro



Order Simplant Guide File, Atlantis Abutment, Atlantis Core File and optional Atlantis Healing Abutment



Dental technician prints the surgical guide. Dental technician designs and mills the temporary crown (based on the Atlantis Core File)



Provide surgical guide and restoration kit to the dentist



Implant surgery and temporization - Place the pre-surgically manufactured Atlantis abutment and crown (or Atlantis Healing Abutment)

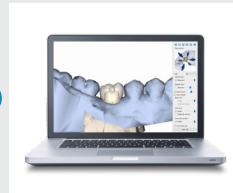
## Final restoration

After soft-tissue healing, the temporary crown is removed and the initial abutment is evaluated.

The clinician chooses to either keep or replace the initial Atlantis Abutment.



Digital Impressions - Primescan  
Use Atlantis IO-FLO scan body



Order final abutment - Design the final crown from the Atlantis Core File



Place final abutment and final crown.