

Primescan for Atlantis[®] suprastructures



Primescan for Atlantis[®] suprastructures

Primescan your way to full-arch implant success:

- Improve the precision, function and esthetics of your prosthetic solutions
- Conveniently capture and share reliable data
- Extremely predictable treatment even for complex restorations



Primescan for Atlantis[®] suprastructures

Improve esthetics with precision:

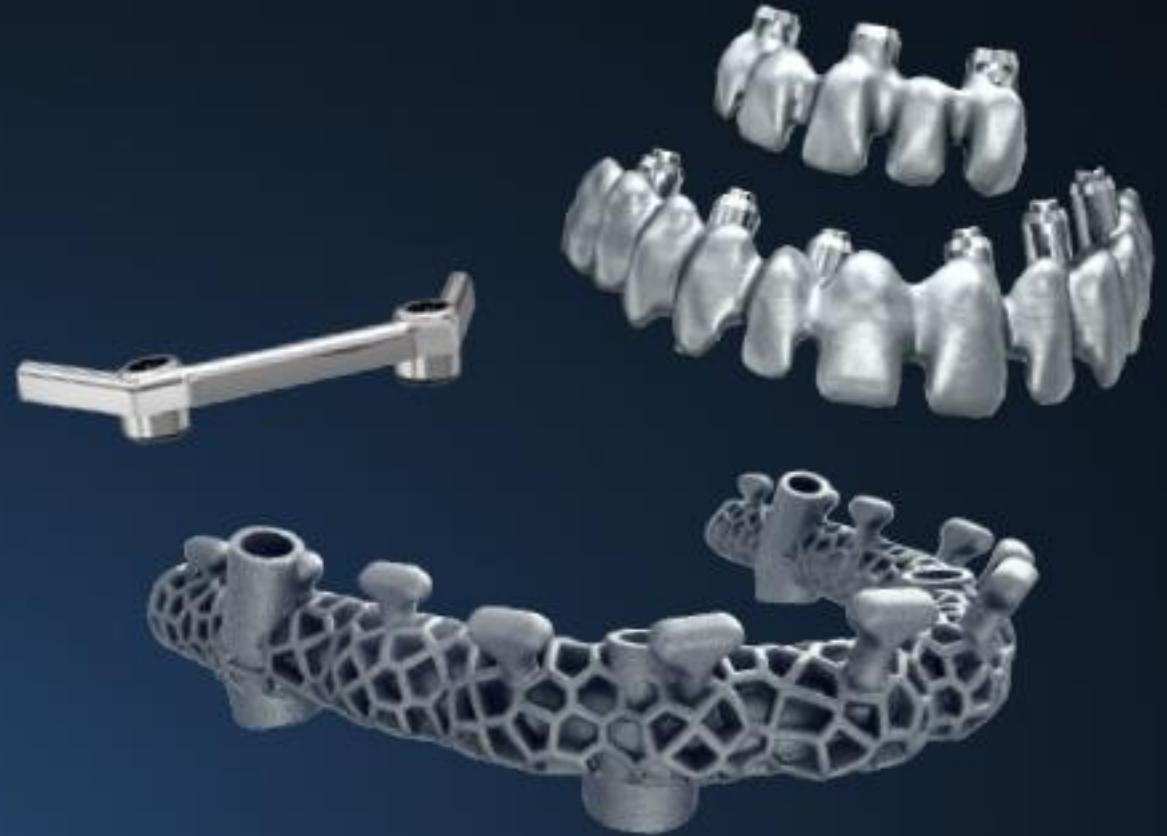
- Handle multiple-unit cases safely and efficiently
- Primescan shortens treatment time
- Reliable data ensure effective collaboration



Primescan for Atlantis[®] suprastructures

Confidence in restorative results:

- Designed with esthetics in mind
- Predictability for the final result
- Passive fit ensures long-term success



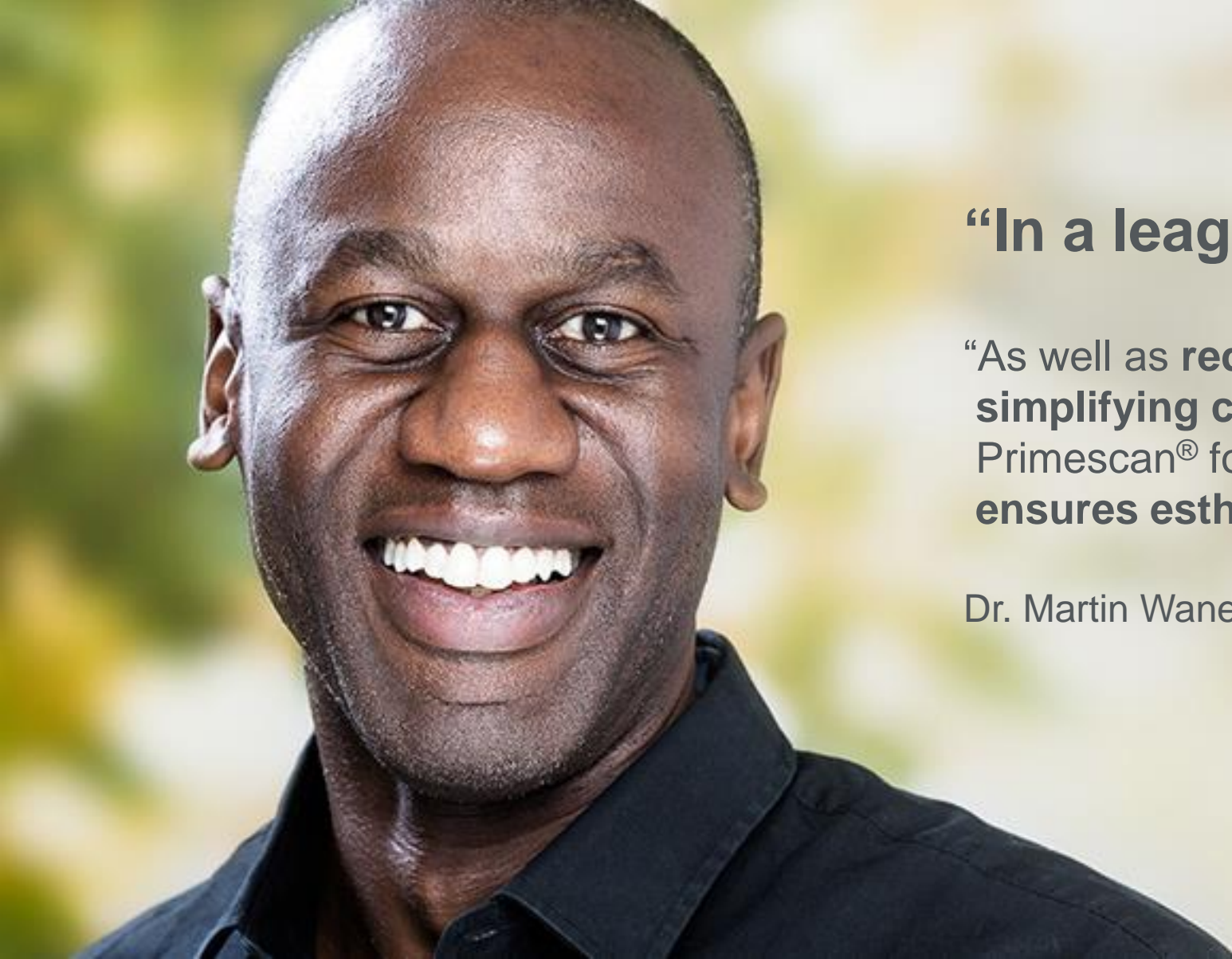
Primescan for Atlantis[®] suprastructures

Based on proven platforms:

- Backed by science
- Astra Tech Implant System, Ankylos and Xive premium implant systems*
- Superb functional and esthetic results for implants and abutments



**Refer to Atlantis suprastructures IO FLO-S compatibility chart*



“In a league of its own...”

“As well as reducing chair time and simplifying collaboration with my laboratory, Primescan[®] for Atlantis[®] suprastructures ensures esthetic predictability and a perfect fit.”

Dr. Martin Wanendeya, United Kingdom



“It’s just so efficient...”

“Working with digital impressions, even for full-arch cases, **makes perfect sense**. The moment we get the scan from the clinician, we can **immediately start** discussing the case. We also **save the work** of creating a plaster model of the conventional impression.”

Steve Campbell, Certified Dental Technician,
United Kingdom

Thank You

